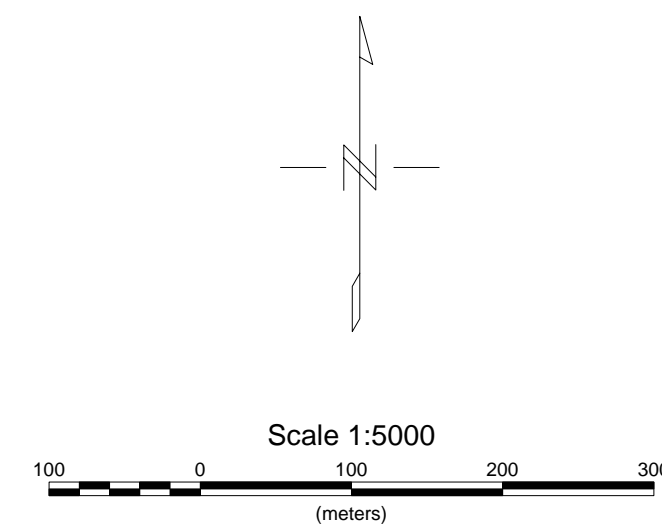
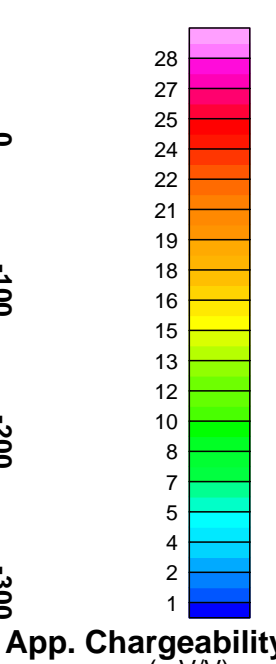
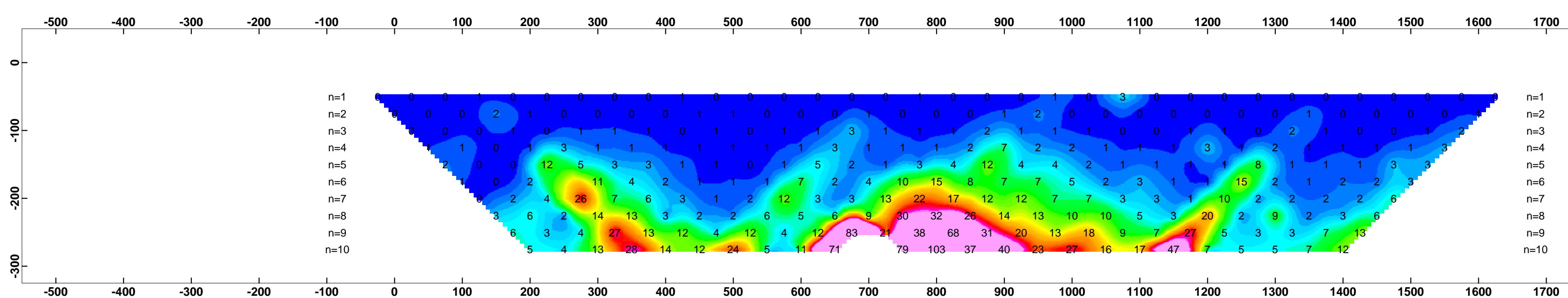
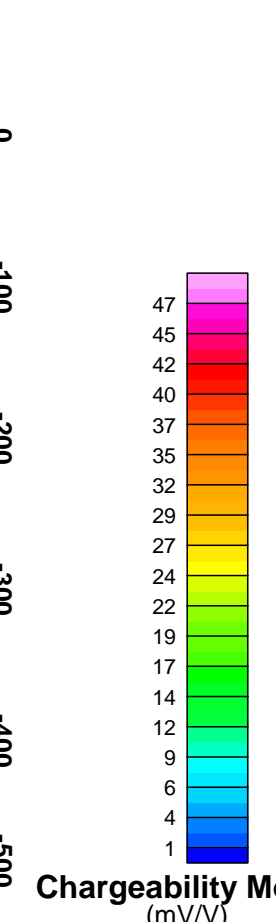
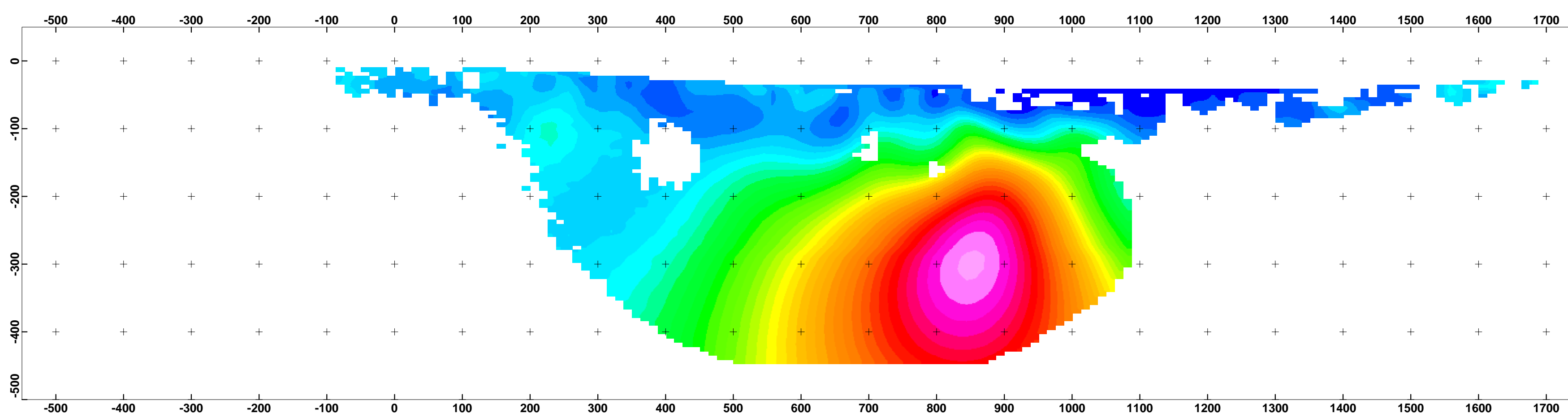
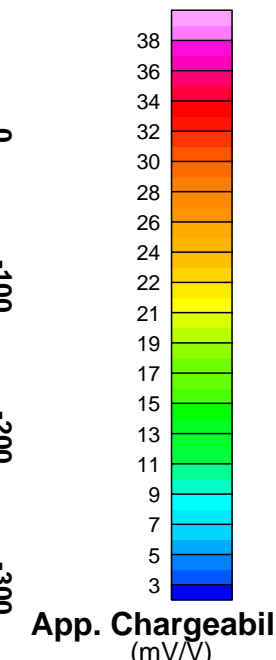
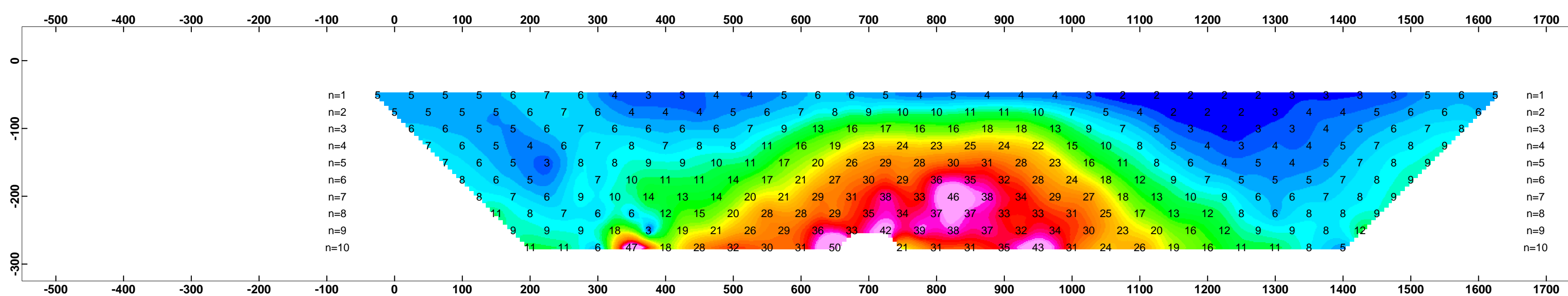
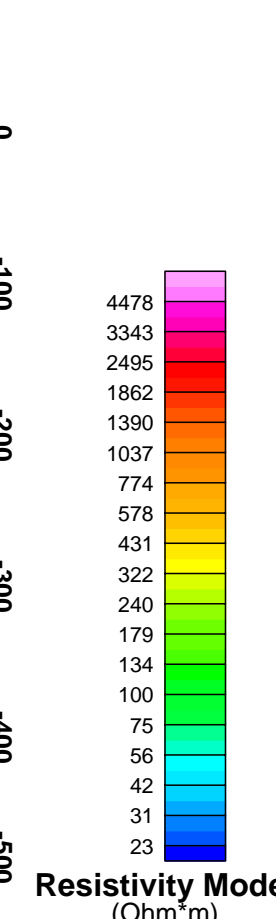
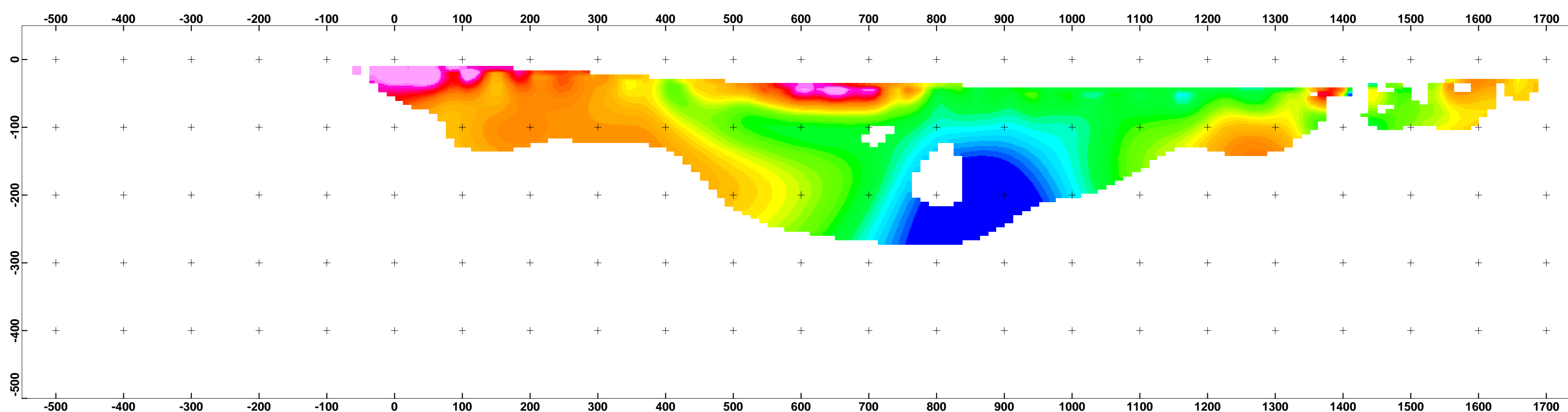
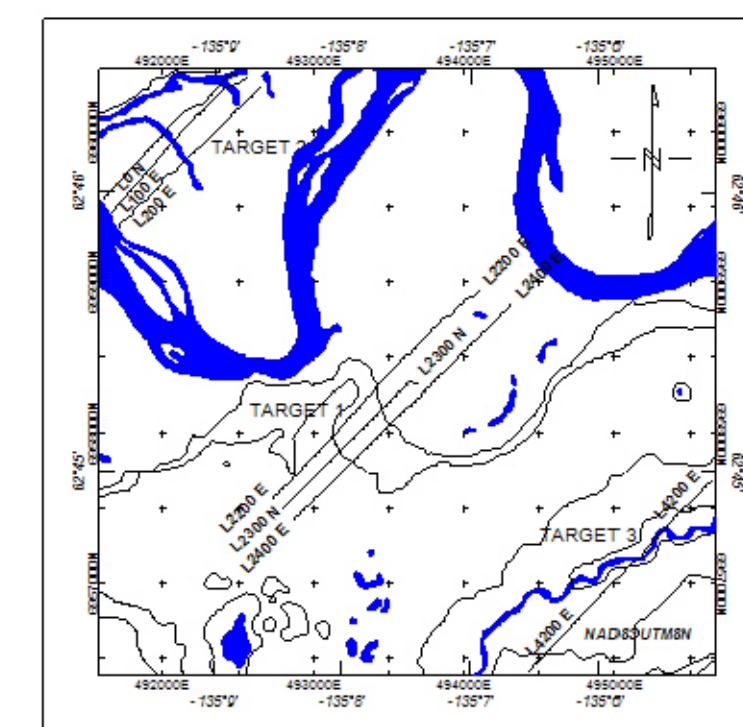
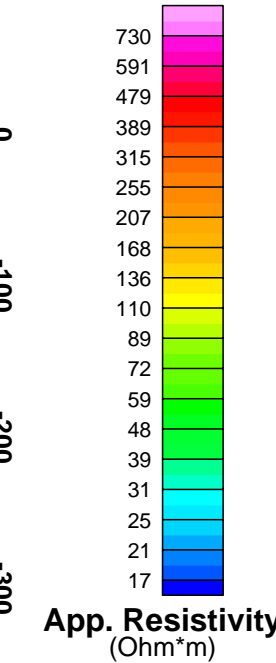
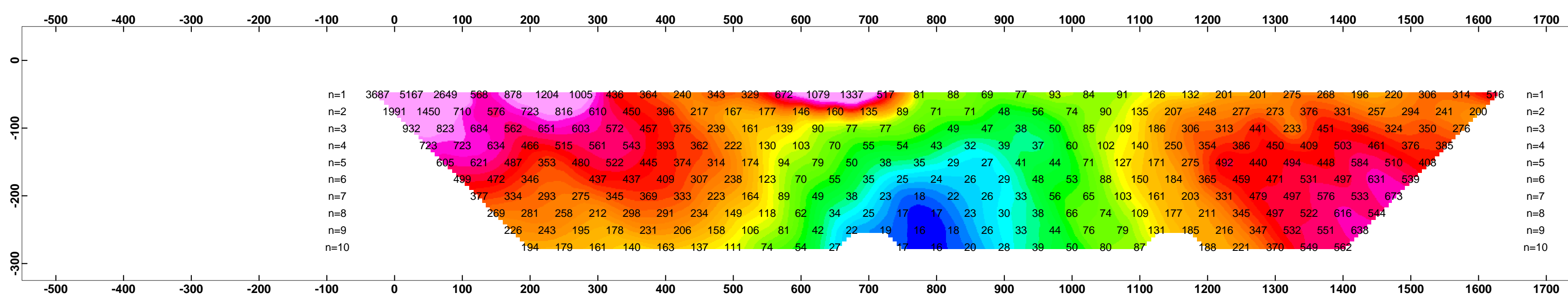
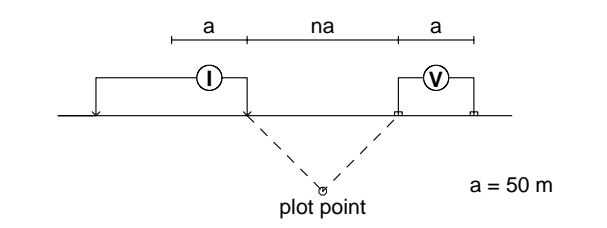


L4200 COMPOSITE SECTION

LEGEND
Bouguer anomaly profile
Scale: 1 cm: 0.5 mGal
Bouguer anomaly profile (trend removed)
Scale: 1 cm: 0.2 mGal
Station spacing: 50m
Points surveyed on this sheet: 37
Modified Pole-Dipole Array
Stationary electrode at 1700N (moving S)
Receiver: 16s EnePro
Transmitter: GDD T-11 S 5kW
Dates surveyed: July 22, 2009



COPPER RIDGE EXPLORATIONS INC.
CLEAR LAKE PROJECT
2009 IP and Gravity Surveys
Target 3 - Line 4200
Sept 04, 2009
Aurora Geosciences Ltd.